



## Asphalt Pavement Resurfacer

Asphalt sealers such as SWEPCO's Heavy Duty Asphalt Paving Sealer and Pavron do wonders to prolong the life of and improve the looks of weathered asphalt pavement. But, when pavement has low, alligatored, widespread cracked or rough areas, you really need SWEPCO

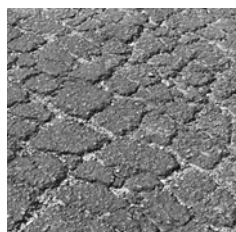
Asphalt Pavement Resurfacer. This special polymerized high solids asphalt formulation is different from either a crack filler or sealer. It is a thick, slurry type product, designed to fill cracks, depressions and other dimensional defects in asphalt pavement with a premium blend of asphalt, select fillers and binders. Just stir, apply and let dry. The resulting surface can be left to weather as is or can be sealed over to complete the restoration of the existing surface. Either way, SWEPCO Asphalt Pavement Resurfacer improves the servicability of the area and helps prevent further deterioration.



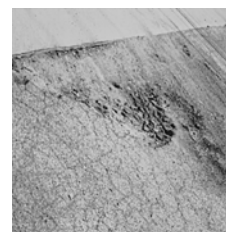
### KEY FEATURES

- fast, economical resurfacing of alligatored, cracked, rough asphalt
- helps restore seamless, attractive, serviceable surface
- won't "telegraph" through
- saves cost & inconvenience of asphalt tear out, patches or overlays
- bonds tightly -- high solids polymerized formula insures excellent service life
- highly resistant to traffic, standing water, oxidation
- highly maintainable surface means cost effective life
- compatible with all SWEPCO sealers & crack fillers
- sealers can be applied in as little as 60 minutes
- saves time & labor -- just mix, pour and spread
- convenient packaging in 6-gallon (23-liter) pails

### For Quick, Lasting Repairs ...



ALLIGATORING OR  
CRACKING



LOW OR DAMAGED  
AREAS

Use SWEPCO Asphalt Pavement Resurfacer to quickly and economically prolong the life of rough, weathered asphalt pavement.

PERFORMANCE



## Roofing & Building Maintenance Products Technical Information & Specifications

Refer to Product Data Bulletin or Product Container Label for complete preparation, application and coverage rate information.

# Asphalt Pavement Resurfacer

### PURPOSE & DESCRIPTION

SWEPCO Asphalt Pavement Resurfacer is a polymer enhanced, high solids asphalt emulsion used for resurfacing alligatored areas, spider cracking, depressions and other dimension defects in asphalt pavement. Excellent bond adhesion, oxidation resistance and resistance to standing water make it ideal for use in restoring weathered asphalt. Helps prevent further deterioration of resurfaced area. Bonds tightly and has flexural characteristics required to insure long service life. Can be left to weather or can be sealed with either solvent sealers, such as SWEPCO Heavy Duty Asphalt Paving Sealer, or asphalt emulsion type sealers, such as SWEPCO Pavron.

### PHYSICAL PROPERTIES

- Adhesion to Weathered Asphalt: Excellent
- % Solids: >70
- Unit Weight: 12.0 lbs./gal. (1.44 kg/liter)
- Dry To Touch: < 60 minutes
- Color: Black
- Consistency: Easily trowelable

### PACKAGING

Available in 6-gallon (23-liter) pails.

### SURFACE PREPARATION

Surfaces must be clean, sound and dry. Use pressure washing or compressed air to clean out cracks and surface. Let dry.

### APPLICATION

For best adhesion, surface and ambient temperature should be above 50°F (10° C) both during and for at least 24 hours following application. Mix material in pail with a 400-600 rpm commercial drill and mixing attachment to compensate for any settling which may have occurred during shipment or storage. Pour on surface and spread with squeegee with all strokes in one direction and as few strokes of squeegee as possible.

### COVERAGE RATES

Varies greatly depending upon type of nature of the resurfacing work. On average, one 6-gallon (23-liter) pail will cover about 50 square feet (4.50 m<sup>2</sup>).

### CURING

Can support light foot traffic in less than 60 minutes, depending upon temperature, humidity and wind. Emulsion type sealers, such as SWEPCO Pavron, can be applied when dry to touch. Allow to cure 24 hours before applying solvent based sealers such as SWEPCO Heavy Duty Asphalt Paving Sealer.

### CLEAN-UP

Clean-up spills and tools with mineral spirits or xylene before the product sets.

### STORAGE

Unopened containers have a shelf life of one year provided they are stored in a dry location and protected from freezing and high temperatures.

## Southwestern Petroleum Corporation

P. O. Box 961005 • Fort Worth, TX 76161-0005 • Phone: (800)877-9372 or (817)332-2336 • Fax: (817)877-4047 • Web: [www.swepcousa.com](http://www.swepcousa.com)  
Southwestern Petroleum Europe • Industrieweg 6 • B-2390 Oostmalle (Antwerp) Belgium • Phone: (32-3)312 31 41 • Fax: (32-3)311 72 77  
Southwestern Petroleum Canada • 87 West Drive • Brampton (Toronto), Ontario, Canada L6T 2J6 • Phone: (905)457-0511 • Fax: (905)457-0637